

AIR ACTIVATED TEFLON® ASPIRATOR

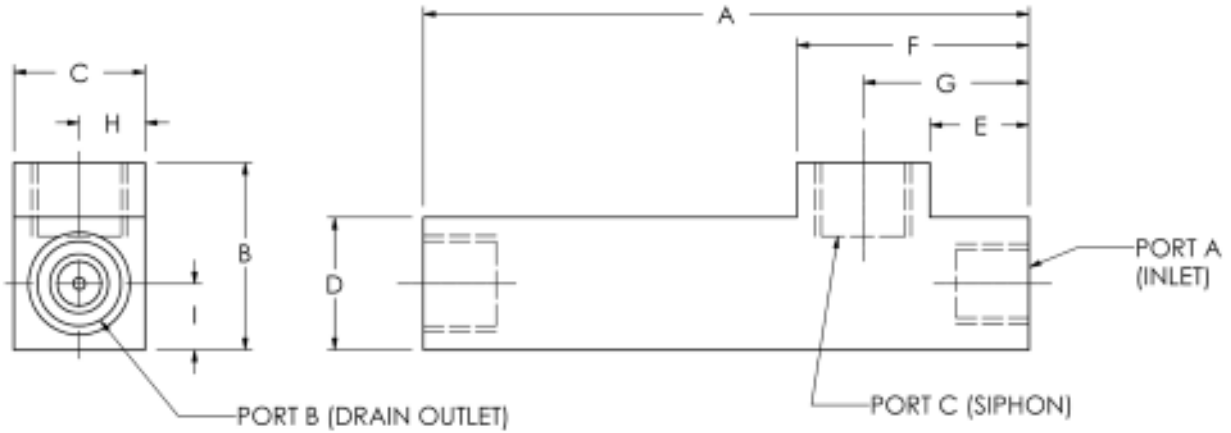
- g** ONE PIECE VIRGIN PTFE BODY
- g** EXCELLENT FOR SIPHONING HARD TO HANDLE CHEMICALS
- g** ELIMINATES THE CHEMICAL DILUTION COMMON TO LIQUID ASPIRATORS
- g** ECONOMICALLY OPERATES ON AIR
- g** MEDIA BEING SIPHONED CAN BE RECIRCULATED AND RE-USED



SPECIFICATIONS

Size	3/8"	1/2"
Vacuum Rating – Min/Max inches of Hg	2.5/6.0	2.5/6.0
Air Pressure – Min/Max PSIG (kPa)	20/60 (138/414)	20/60 (138/414)
Flow Rate* – Min/Max GPM	0.5/1.0	0.5/1.0
Max Temperature – Media °F (°C)	302 (150)	302 (150)
Max Temperature – Ambient °F (°C)	140 (60)	140 (60)

- * (1) The best flow can be obtained by initiating the siphon by activating the Aspirator with 30 psi of air for 5-10 seconds. The air supply can then be stopped and the Aspirator will continue the siphoning action.
(2) Viscosity variations in fluids being siphoned can cause variations in performance.



NOTE: FOR BEST SIPHON ACTION , ASPIRATOR SHOULD BE MOUNTED APPROXIMATELY 14" BELOW POINT OF SUCTION.

SIZE	A	B	C	D	E	F	G	H	I	PORT A	PORT B	PORT C
3/8"	5.19	1.59	1.13	1.13	0.85	1.99	1.42	0.56	0.56	3/8 FNPT	1/2 FNPT	3/8 FNPT
1/2"	5.19	1.59	1.13	1.13	0.85	1.99	1.42	0.56	0.56	3/8 FNPT	1/2 FNPT	1/2 FNPT

Specifications subject to change without notice.

All dimensions are in inches.

ORDERING INFORMATION

ASA 00 X P TFE XXXX

OPTIONS: #### - Non-Standard Options (Consult Factory)

BODY MATERIAL: PTFE

CONNECTION TYPE: FNPT

CONNECTION SIZE: 06 - 3/8"
08 - 1/2"

DILUTION RATIO: 00 - None

AIR ACTIVATED TEFLON® ASPIRATOR

® Teflon is a registered trademark of the Dupont Corporation.

LS-DASA01-01

DYTEC
CORPORATION

102 Compass Point Dr., Suite D
St. Charles, MO 63301
636-949-5600 Fax: 636-724-2492
www.dytec.com