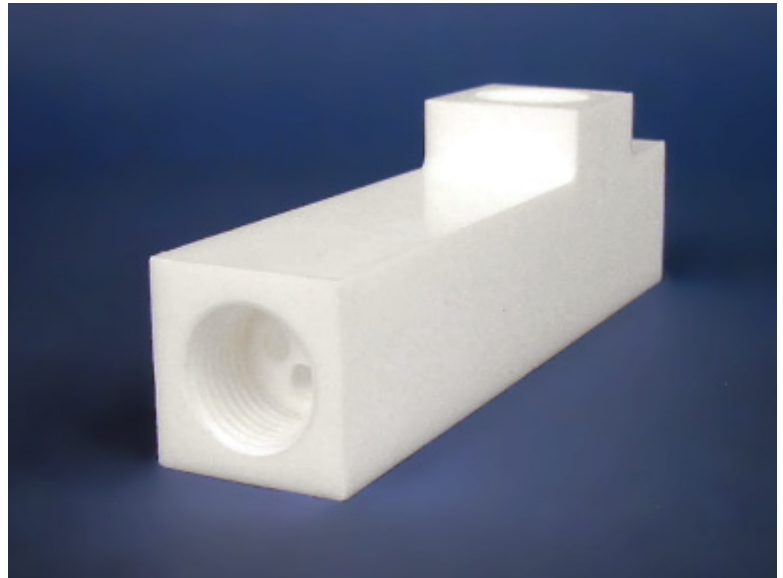


LIQUID ACTIVATED TEFLON® ASPIRATOR

- ◆ ONE PIECE VIRGIN PTFE BODY
- ◆ EXCELLENT FOR SIPHONING HARD TO HANDLE CHEMICALS
- ◆ WILL EXTRACT HEATED FLUIDS AND DILUTE
- ◆ HAS NO SPECIFIC MOUNTING LOCATION
- ◆ DESIGNED FOR EFFICIENT AND RAPID SIPHONING



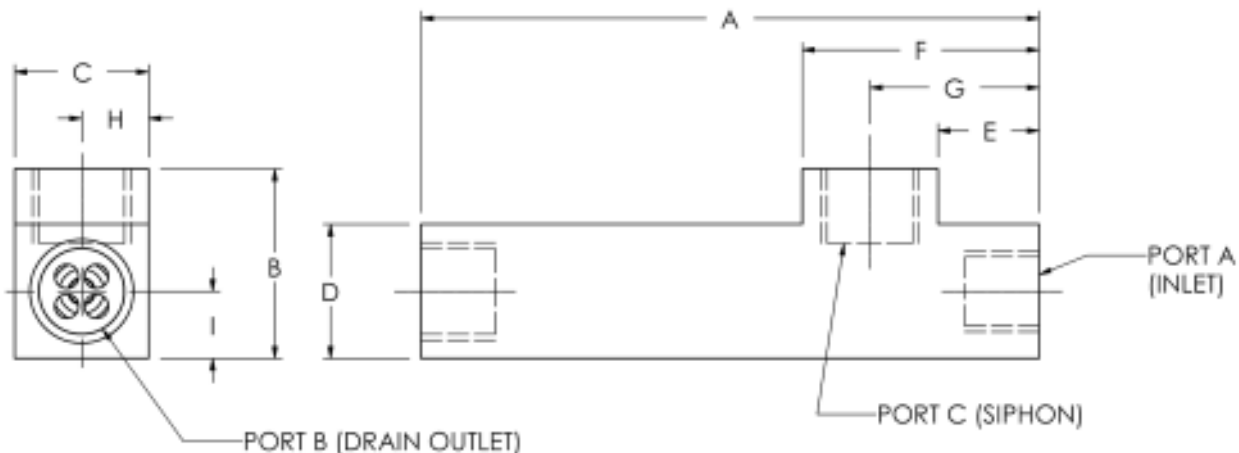
SPECIFICATIONS

Size	3/8"	1/2"
Vacuum Rating – Min/Max inches of Hg	5/18	5/18
Dilution Ratio*	1.25:1 to 2.50:1	1:1 to 2.50:1
City Water Pressure – Min/Max PSIG (kPa)	20/60 (138/414)	20/60 (138/414)
Flow Rate** – Min/Max GPM	1.0/4.0	1.0/4.0
Max Temperature – Media °F (°C)	302 (150)	302 (150)
Max Temperature – Ambient °F (°C)	140 (60)	140 (60)

* (1) Higher ratios cause slower drain.

(2) User must be cautious of potential chemical reactions.

** Viscosity variations in fluids being siphoned can cause variations in performance.



SIZE	A	B	C	D	E	F	G	H	I	PORT A	PORT B	PORT C
3/8"	5.19	1.59	1.13	1.13	0.85	1.99	1.42	0.56	0.56	3/8 FNPT	1/2 FNPT	3/8 FNPT
1/2"	5.19	1.59	1.13	1.13	0.85	1.99	1.42	0.56	0.56	3/8 FNPT	1/2 FNPT	1/2 FNPT

Specifications subject to change without notice.

All dimensions are in inches.

ORDERING INFORMATION

ASL 02 X P TFE XXXX

OPTIONS: #### - Non-Standard Options (Consult Factory)

BODY MATERIAL: PTFE

CONNECTION TYPE: FNPT

CONNECTION SIZE: 06 - 3/8"
08 - 1/2"

DILUTION RATIO: 02 - 2:1 (Standard)
05 - 5:1 (Optional)
10 - 10:1 (Optional)

LIQUID ACTIVATED TEFLON® ASPIRATOR

® Teflon is a registered trademark of the Dupont Corporation.

LS-DASL01-02

DYTEC
CORPORATION

102 Compass Point Dr., Suite D
St. Charles, MO 63301
636-949-5600 Fax: 636-724-2492
www.dytec.com