

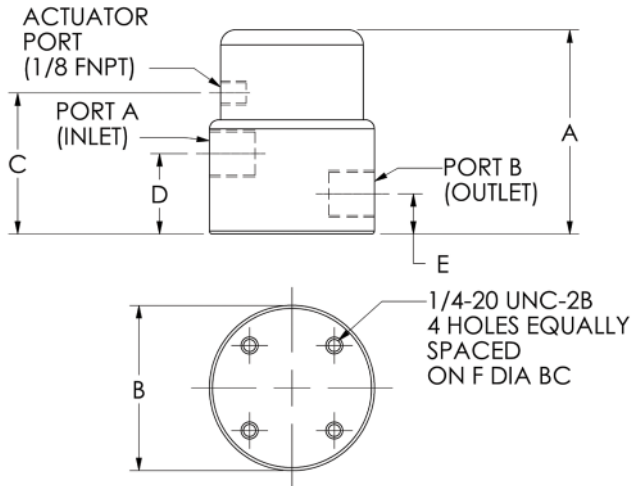
MULTI-PURPOSE PNEUMATIC VALVE

- ◆ ONE PIECE BODY
- ◆ CORROSION RESISTANT
- ◆ NO LUBRICANTS OR METAL IN FLUID PATH
- ◆ EXCELLENT DI WATER VALVE
- ◆ HIGH FLOW CAPACITY
- ◆ IDEAL FOR WET BENCH APPLICATION
- ◆ “MICRO ADJUST” BYPASS OPTION



SPECIFICATIONS

Size		3/8" Orifice	1/2" Orifice	3/4" Orifice	1" Orifice
Cv		2.1	2.8	7.5	13.5
Max Pressure –	Media (Port A) PSIG (kPa)	75 (517)	75 (517)	60 (414)	60 (414)
Max Pressure –	Media (Port B) PSIG (kPa)	45 (310)	45 (310)	10 (69)	10 (69)
Actuator Pressure –	Min/Max PSIG (kPa)	40/80 (276/552)	40/80 (276/552)	40/80 (276/552)	40/80 (276/552)
Max Temperature –	Media °F (°C)				
	PVC	140 (60)	140 (60)	140 (60)	140 (60)
	POLYPROPYLENE	160 (71)	160 (71)	160 (71)	160 (71)
	PVDF	212 (100)	212 (100)	212 (100)	212 (100)
	PTFE	350 (177)	350 (177)	350 (177)	350 (177)
Max Temperature –	Ambient °F(°C)	140 (60)	140 (60)	120 (49)	120 (49)



BODY	PVC	POLY	PVDF	PTFE
BELLOWS	PTFE		PTFE	
BACKING PLATE	PTFE		PTFE	
PISTON	POLYPROPYLENE		PVDF	PVDF
END CAP	POLYPROPYLENE		PVDF	
SPRING	302 SS		302 SS TEFLON® COATED	

SIZE	A	B	C	D	E	F	PORT A	PORT B
3/8"	3.40	2.75	2.35	1.34	0.65	2.00	3/8 FNPT	3/8 FNPT
1/2"	3.40	2.75	2.35	1.34	0.65	2.00	1/2 FNPT	1/2 FNPT
3/4"	4.85	4.00	3.47	2.16	1.00	3.00	3/4 FNPT	3/4 FNPT
1"	4.85	4.00	3.47	2.16	1.00	3.00	1 FNPT	1 FNPT

Specifications subject to change without notice.

All dimensions are in inches.

ORDERING INFORMATION

MPV	2	X	X	P	XXX	X	XXX
-----	---	---	---	---	-----	---	-----

OPTIONS: MA - Micro Adjust RC - Restricted Close
 RO - Restricted Open RB - Restricted Both
 ### - Non-Standard Options (Consult Factory)

SEALS: V - Viton®
 E - Ethylene Propylene
 K - Kalrez®

BODY MATERIAL: PVC - PVC
 POL - Polypropylene
 PVD - PVDF
 TFE - PTFE

CONNECTION: FNPT

ORIFICE & PORT: 6 - 3/8" 8 - 1/2"
 12 - 3/4" 16 - 1"

VALVE CONFIGURATION:
 C - Normally Closed
 O - Normally Open

2 WAY

MULTI-PURPOSE PNEUMATIC VALVE SERIES

® Teflon, Viton and Kalrez are registered trademarks of the Dupont Corporation.

LS-DMPV01-01

DYTEC
 CORPORATION

102 Compass Point Dr., Suite D
 St. Charles, MO 63301
 636-949-5600 Fax: 636-724-2492
 www.dytec.com